

---

# Louisiana Medicaid

---



## Louisiana Medicaid CORE Connectivity Companion Guide

CAQH/CORE Operating Rules 153, 270 and 350

Updated June 1, 2018

## TABLE OF CONTENTS

<b>1.0</b>	<b>INTRODUCTION</b> .....	<b>1</b>
<b>2.0</b>	<b>RESOURCES</b> .....	<b>2</b>
<b>2.1</b>	<b>Contact Information</b> .....	<b>2</b>
<b>3.0</b>	<b>SOFTWARE AND PROGRAMMING</b> .....	<b>3</b>
<b>4.0</b>	<b>EDI GATEWAY</b> .....	<b>4</b>
<b>4.1</b>	<b>ASC X12 Interchange</b> .....	<b>4</b>
<b>4.2</b>	<b>Submitter IDs &amp; Passwords</b> .....	<b>4</b>
<b>4.2.1</b>	<i>Test Bulletin Board System (BBS)</i> .....	<b>4</b>
<b>4.2.2</b>	<i>Production Bulletin Board System (BBS)</i> .....	<b>4</b>
<b>4.3</b>	<b>Bulletin Board Dial-up Phone Numbers</b> .....	<b>5</b>
<b>4.3.1</b>	<i>Test</i> .....	<b>5</b>
<b>4.3.2</b>	<i>Production</i> .....	<b>5</b>
<b>4.4</b>	<b>Communication Specifications</b> .....	<b>5</b>
<b>4.4.1</b>	<i>EDI Gateway - Dial-Up Connection</i> .....	<b>5</b>
<b>4.4.2</b>	<i>Dial-Up Requirements</i> .....	<b>5</b>
<b>4.5</b>	<b>File Naming Conventions</b> .....	<b>6</b>
<b>4.5.1</b>	<i>Production and Test File Names</i> .....	<b>6</b>
<b>4.6</b>	<b>File Transmission Procedures</b> .....	<b>6</b>
<b>4.6.1</b>	<i>How to Connect and Login to the Louisiana EDI BBS</i> .....	<b>6</b>
<b>4.6.2</b>	<i>How to Submit a File to the Louisiana EDI BBS</i> .....	<b>7</b>
<b>4.6.3</b>	<i>How to Receive Responses and Download Files</i> .....	<b>7</b>
<b>4.6.4</b>	<i>Receipt of 835 Remittance from Test File</i> .....	<b>7</b>
<b>4.7</b>	<b>EDI Gateway – sFTP Process</b> .....	<b>7</b>
<b>4.7.1</b>	<i>Enrollment</i> .....	<b>8</b>
<b>4.7.2</b>	<i>Steps Required – A Quick Reference</i> .....	<b>8</b>
<b>4.7.3</b>	<i>System Regions</i> .....	<b>8</b>
<b>4.7.4</b>	<i>Files Sent to Molina</i> .....	<b>8</b>
<b>4.7.5</b>	<i>Files Sent From Molina</i> .....	<b>8</b>
<b>4.7.6</b>	<i>First Time Logging into a Region</i> .....	<b>9</b>
<b>4.7.7</b>	<i>Trading Partner Key Information</i> .....	<b>9</b>
<b>4.8</b>	<b>Medicaid Eligibility Verification System (MEVS) Overview</b> .....	<b>10</b>
<b>4.8.1</b>	<i>e-MEVS</i> .....	<b>10</b>
<b>4.8.2</b>	<i>Switch Vendor MEVS</i> .....	<b>11</b>
<b>4.8.3</b>	<i>Approved Switch Vendors</i> .....	<b>11</b>
<b>4.8.4</b>	<i>Batch 270/271 Eligibility Transactions</i> .....	<b>11</b>
<b>4.9</b>	<b>On-Line Claim Status Inquiry</b> .....	<b>12</b>
<b>4.9.1</b>	<i>Overview</i> .....	<b>12</b>
<b>4.9.2</b>	<i>Accessing the Application</i> .....	<b>12</b>
<b>4.9.3</b>	<i>Navigating Through the Application</i> .....	<b>12</b>
<b>5.0</b>	<b>ACA CORE TRANSPORT MODES</b> .....	<b>13</b>
<b>5.1</b>	<b>Connectivity Overview</b> .....	<b>13</b>
<b>5.1.1</b>	<i>Compliance Version</i> .....	<b>13</b>
<b>5.1.2</b>	<i>Supported Transactions</i> .....	<b>13</b>
<b>5.1.3</b>	<i>Batch Transactions</i> .....	<b>13</b>
<b>5.1.4</b>	<i>Passwords</i> .....	<b>13</b>
<b>5.2</b>	<b>System Availability</b> .....	<b>13</b>
<b>5.3</b>	<b>Transaction Sizes</b> .....	<b>14</b>
<b>5.4</b>	<b>Process Flows</b> .....	<b>14</b>
<b>5.4.1</b>	<i>Real Time Eligibility Request and Response Handling</i> .....	<b>14</b>

---

	5.4.2	<i>Batch Request and Response Handling</i>	15
	5.4.3	<i>Batch Pickup</i>	16
5.5		<b>Communication Protocols</b>	18
	5.5.1	<i>SOAP + WSDL</i>	18
	5.5.2	<i>HTTP MIME Multipart</i>	18
5.6		<b>CAQH CORE Phase II and Phase III ERA SOAP + WSDL Interface</b>	18
	5.6.1	<i>Overview</i>	18
	5.6.2	<i>Header Requirements</i>	19
	5.6.3	<i>PayloadType</i>	20
	5.6.4	<i>Processing Mode</i>	20
	5.6.5	<i>PayloadID</i>	20
	5.6.6	<i>TimeStamp</i>	20
	5.6.7	<i>Sender</i>	20
	5.6.8	<i>ReceiverID</i>	20
	5.6.9	<i>CORE Rule Version</i>	20
	5.6.10	<i>Payload</i>	21
	5.6.11	<i>SOAP Sample in PHP</i>	21
5.7		<b>CAQH CORE Phase II and Phase III ERA MIME Multipart Form Interface</b>	22
	5.7.1	<i>Overview</i>	22
5.8		<b>Error Reporting</b>	22
	5.8.1	<i>HTTP Status and Error Codes</i>	23
	5.8.2	<i>Envelope Processing Status and Error Codes</i>	23
5.9		<b>Rules of Behavior</b>	24
6.0		<b>APPENDIX A – SFTP BACKGROUND</b>	25
	6.1	<b>What is sFTP?</b>	25
	6.2	<b>Public/Private Key File Processing</b>	25
	6.3	<b>Key Generation</b>	25
	6.4	<b>sFTP Clients</b>	25
7.0		<b>APPENDIX B – CHANGE LOG</b>	26
8.0		<b>APPENDIX C – CAQH CORE CONNECTIVITY VALID REQUEST AND RESPONSE EXAMPLES</b>	27

---

## 1.0 Introduction

This Connectivity Manual describes the options available for connecting to Louisiana Medicaid for the purpose of submitting electronic claim data (837 Transactions), querying recipient eligibility status (270/271 Transactions), determining the status of the payment of a previously submitted claim (276/277 Transactions), and the methods available for the retrieval of a remittance advice (835 Transaction). Not all methods are available for all transactions. The available options are:

- dial-up
- sFTP
- the Affordable Care Act's CORE compliant \*
  - SOAP+WSDL or
  - HTTP/S MIME transport modes.
- lamedicaid.com web portal

This manual will provide the necessary information for the actual transmission and receipt of electronic information. This manual also provides instruction on how to submit Eligibility and Claim Status transactions and files to the lamedicaid.com web portal using real time and Batch Web upload. Regardless of the method used to submit electronic Medicaid files, you must first test with Molina.

Only providers/submitters that are enrolled and approved for participating in the Louisiana Medicaid Program are authorized to send and retrieve information to Louisiana. If you do not have a provider/submitter ID, please review the Resources section of this manual regarding information available on lamedicaid.com.

There are several advantages to submitting claims and other data electronically:

- Reduces the need to re-type information;
- Helps reduce the number of errors;
- Electronic claims can be processed and paid much more quickly;
- Electronic remittances can be posted more easily; and
- Electronic eligibility and claim status inquiries can be transmitted quickly.

**If you do not have a provider/submitter ID, please review the information on the Provider Enrollment link available on lamedicaid.com or call (225)216-6370.**

\*837 Claim Transactions may not be transmitted via CAQH/CORE connectivity

## ***2.0 Resources***

Many of the Louisiana Medicaid resources for electronic billing and other transactions can be found at the Louisiana Medicaid website ([www.lamedicaid.com](http://www.lamedicaid.com)). Please make sure to review the resources available at this website before contacting Molina directly.

Resources that will be available at the Louisiana Medicaid website, including this Connectivity Guide, are:

- Provider Enrollment Instructions and forms
- EDI B2B Testing Instructions for 837 Fee for Service (FFS) & Encounters claims, NCPDP files, and 270, 276, and 278 transactions
- Electronic Updates
- Louisiana Medicaid Companion Guides
- 835 Electronic Remittance Advice Instructions
- 835 Change Request Form
- EFT Electronic Funds Transfer
- Approved Submitters Listing
- Links to additional Information about electronic Health Care transactions

## ***2.1 Contact Information***

Molina EDI Department- For all questions related to Electronic Data Interchange & Encounter file exchange, as well as EDI problems:

Email: [HipaaEDI@MolinaHealthCare.com](mailto:HipaaEDI@MolinaHealthCare.com)

Phone: (225) 216-6303

Molina Provider Relations Department – For detailed information concerning the payment of claims, and the Remittance Advice:

Provider Inquiry Line: 1-800-473-2783 or (225) 927-5040

Molina Provider Enrollment Department –For enrollment as a new electronic submitter for Louisiana Medicaid, or to change submitter numbers:

Provider Inquiry Line: (225) 216-6370

### ***3.0 Software and Programming***

Louisiana Medicaid does not provide software to submitters for electronic claims submissions. All submitters must have a way to create or produce electronic files to submit to Louisiana Medicaid.

Louisiana Medicaid does have a posted “Approved Submitters” list. This will provide a list of submitters that have completed the testing process and are in production status on behalf of other providers. It will also give contact information and status of submitters that are willing to accept new providers. Louisiana Medicaid does not promote any one submitter over another.

This document contains programming examples such as an example in Section 5 of CORE compliant SOAP scripting that is intended only as an illustration and starting point.

## **4.0 EDI Gateway**

Louisiana Medicaid has established 3 communications options for the EDI Gateway.

- 1) Dial-up connection - asynchronous protocol, modem communications using a Plain Old Telephone System (POTS) telephone land line. Section 4.4.1
- 2) Internet sFTP connection - Secure File Transfer Protocol to provide an end to end secure tunnel and Public/Private Key pair data encryption. Section 4.7 and Appendix A
- 3) Affordable Care Act, CAQH/CORE compliant SOAP or MIME. Section 5

Submitters will use the EDI Gateway to submit and retrieve files electronically with Louisiana Medicaid. Every submitter receives a “mailbox”, which is where their files are stored and maintained. You would send files to Molina via the “To\_Molina” folder and retrieve files via the “From\_Molina” folder through either the dial-up or sFTP Internet connection.

For the sake of redundancy, Louisiana Medicaid recommends that sFTP submitters be capable of connecting through the dial-up connection as well.

### **4.1 ASC X12 Interchange**

TA1s and 999s are returned by the same route the claim is submitted. If a file is received on the BBS, the TA1 and 999 will be returned to the BBS. Likewise for sFTP.

### **4.2 Submitter IDs & Passwords**

Requests for a new submitter ID or requests to change a submitter ID must be directed to Molina Medicaid Solutions Provider Enrollment at (225) 216-6370.

**Note:** A Submitter ID is required before a password can be issued. The HIPAA Testing Service can be used without a LA Medicaid submitter ID, but requires a user ID and password. Louisiana testing **REQUIRES** a LA Medicaid submitter ID and a password.

#### **4.2.1 Test Bulletin Board System (BBS)**

All providers and submitters must demonstrate successful testing prior to submitting to production. If you do not have a password, please contact the EDI unit by email [HipaaEDI@MolinaHealthCare.com](mailto:HipaaEDI@MolinaHealthCare.com) or call (225) 216-6303.

#### **4.2.2 Production Bulletin Board System (BBS)**

All providers and submitters must demonstrate successful testing prior to submitting to production. If you do not have a password, please contact the EDI unit by email [HipaaEDI@MolinaHealthCare.com](mailto:HipaaEDI@MolinaHealthCare.com) or call (225) 216-6303.

### ***4.3 Bulletin Board Dial-up Phone Numbers***

#### ***4.3.1 Test***

Dial **(225) 927-4123** to access the test BBS

To upload the following types of files to Test:

Select (A) SEND FILES

- 837 Institutional
- 837 Dental
- 837 Professional

To download the following types of files:

Select (B) RECEIVE FILES

- TA1 Interchange Acknowledgement
- 997 / 999 Functional Acknowledgement
- 835 Payment Advice
- Testing Reports (CP06 & CP090 Reports for parallel testing)

#### ***4.3.2 Production***

Dial **(225) 302-5028** or **(225) 927-4326** to access the production BBS. (Please do not try to use the production line for testing)

To upload the following types of files to Production:

Select (A) SEND FILES

- 837 Institutional
- 837 Dental
- 837 Professional

To download the following type of files:

Select (B) RECEIVE FILES

- TA1 Interchange Acknowledgement
- 997 / 999 Functional Acknowledgement
- 835 Payment Advice

### ***4.4 Communication Specifications***

#### ***4.4.1 EDI Gateway - Dial-Up Connection***

The dial-up connection is a process that involves establishing a connection through the dial-up software and interacting with the menu prompts.

#### ***4.4.2 Dial-Up Requirements***

- Asynchronous Hayes compatible modem
- Minimum baud rate of 9600 kbps, 8 data bits, no parity, 1 stop bit
- Dial-up Software that supports the Z-Modem transfer protocol (i.e. HyperTerminal, ProComm). Scripting is not required.



## 4.5 File Naming Conventions

This section describes how files should be named for files uploaded to the BBS.

### 4.5.1 Production and Test File Names

The file names for test files are in the table below.

**Please replace the sample submitter number 4599999 with your own LA Medicaid submitter number**

Transaction	Claim Type	Name	File Extension	Sample file name
837D	11	Adult Dental	DNA	H4599999.DNA
837D	10	Dental-EPSTDT	DNE	H4599999.DNE
837P	09	Durable Medical Equip.	DME	H4599999.DME
837P	04	Physician, ADHC, Pediatric Day Health Care	PHY	H4599999.PHY
837P	05	Rehabilitation	REH	H4599999.REH
837P	07	Ambulance Transportation	TRA	H4599999.TRA
837P	13	KIDMED/EPSTDT	KID	H4599999.KID
837I	14	Medicare Advantage Part A	XXA	H4599999.XXA
837P	15	Medicare Advantage Part B	XXB	H4599999.XXB
837I	01 & 03	Hospital IP/OP	UB9	H4599999.UB9
837I	06	Home Health	HOM	H4599999.HOM
837P	16	Adult Day Health Care**	PHY	H4599999.PHY
837I	02	LTC, ICF/DD, SNF, Hospice	LTC	H4599999.LTC
837P	08	Non-Emergency Transportation	NAM	H4599999.NAM

\*\*Adult Day Health Care was switched to 837P PHY extension effective for dates of service 04012016

## 4.6 File Transmission Procedures

Please refer to the EDI Companion Guide found on the following link for more detailed information and screen snapshots of the following subsections.

[http://www.lamedicaid.com/provweb1/HIPAABilling/5010\\_EDI\\_General\\_Companion.pdf](http://www.lamedicaid.com/provweb1/HIPAABilling/5010_EDI_General_Companion.pdf)

### 4.6.1 How to Connect and Login to the Louisiana EDI BBS

- To login to the Louisiana EDI BBS, submitters must first have a valid Submitter ID and Password.
- Configure the dialup software (Section 4.4.2) to dial the Louisiana EDI BBS using the appropriate phone numbers from Section 4.3 of this Guide.
- Once connected to the BBS, submitters should see the BBS Login Screen
- Submitters must enter a valid Submitter ID and Password
- Then press the [Y] key to complete the authentication process or press the [N] key to exit.

- The BBS Main Menu should appear.

#### **4.6.2 How to Submit a File to the Louisiana EDI BBS**

- Login to the Louisiana EDI BBS using your Submitter ID and Password.
- At the BBS Main Menu press the [A] key to select the Send File(s) option of the Main Menu.
- The BBS File Upload screen will display
- A file open dialog screen should appear. If it does not, then manually start the upload process. Consult your dial-up software documentation for details.
- After the file is uploaded to the BBS, the BBS File Upload Review Y/N will display.
- If you want to review the files and their edits, press the [Y] key and the BBS File Uploaded Review [Y] screen will display a list of uploaded files. To bypass the file review screen press the [N] key, you will be redirected back to the BBS Main Menu.

#### **4.6.3 How to Receive Responses and Download Files**

- Login to the BBS.
- From the BBS Main Menu, press the [B] key to retrieve files. The BBS File Download Selection Screen will display.
- Select a file type to download from the BBS File Download Selection Screen.
- The BBS File Download List will display a list of files available for download.
- Select the file to download. The BBS File Download Step 1 of 2 screen will display a choice to compress the files before download. Choose [Y] to compress the file or [N] to download the file uncompressed.
- The BBS Receive File Step 2 of 2 screen will be displayed. A “Browse for Folder” dialog should be display on entry into the screen. Select a target location to download your file. If the dialog box is not displayed, manually start the download process. Consult your Dial-up Software documentation for details.
- After the selected file or files are downloaded, you will be able to navigate back to the BBS File Download Selection Screen.

#### **4.6.4 Receipt of 835 Remittance from Test File**

Files sent to the test BBS will automatically generate 835s based on the submitted test file data. VBC s should download and evaluate the 835s.

Pharmacy submitters will automatically get a test 5010 835 posted to the test BBS based on the previous weeks production data. Pharmacy submitters can access the test BBS to download their test 835.

### **4.7 EDI Gateway – sFTP Process**

Louisiana Medicaid offers a secure FTP system that has been developed to allow for more reliable and expedited electronic file exchanges for trading partners. The site is located at <ftp.lamedicaid.com>.

This site is not a replacement for the current dial-up BBS system. It is intended to supplement the existing system. Submitters may continue and are encouraged to send and retrieve files using the existing BBS.

To facilitate increased security requirements, all files sent to and received from the Molina sFTP site must be encrypted using Public/Private key pair encryption technology. For an explanation of this technology, please refer to Appendix A of this document. Molina assumes any trading partner requesting access to the system will be

familiar with how this technology is used. Gnu Privacy Guard, a free open source client, is available at <http://www.gnupg.org>. Symantec's PGP client is another client although it is not free.

### 4.7.1 Enrollment

The Molina EDI unit will invite EDI trading partners to enroll in the sFTP system. Account and login information will be sent in an email to the trading partner's contact name on file with the EDI unit. It is critical to maintain current contact information with the Molina EDI unit for this purpose and other submitter-related information. To update contact information, please contact the EDI unit at [hipaaedi@molinahealthcare.com](mailto:hipaaedi@molinahealthcare.com).

### 4.7.2 Steps Required – A Quick Reference

Steps 1 and 2 only need to be done once.

1. Create your own public/private key pair
2. Using an sFTP client, establish connection to <ftp.lamedicaid.com> and upload your public key

Steps 3 and 4 will be done each time you upload a new claim file

3. Using Molina's public key, encrypt your Medicaid claim file
4. Using an sFTP client, upload your encrypted file to <ftp.lamedicaid.com>

Steps 5 and 6 will be done each time you download response files from Molina

5. Using an sFTP client, download your encrypted TA1/999 file from <ftp.lamedicaid.com>
6. Using your private key, decrypt your TA1/999 file

These are detailed in the sections that follow.

### 4.7.3 System Regions

The sFTP server is divided into two separate regions, one for submitter testing and the other for production claims submission. To connect to the Submitter Testing region, login ids will be 450XXXX@**molinatest**. To connect to the Production region, login ids will be 450XXXX@**molinaclaims**.

**Submitters must send a test file to the test region to ensure all encrypt and decrypt functions are working properly before being enabled for Production.** Once files have been processed successfully on the test region, contact the Molina EDI unit at [hipaaedi@molinahealthcare.com](mailto:hipaaedi@molinahealthcare.com) to request access to production.

### 4.7.4 Files Sent to Molina

- All files sent to Molina must be encrypted using the Molina public key available at <http://www.lamedicaid.com/provweb1/HIPAA/HipaaIndex.htm>.
- Currently, all files sent to Molina must have an extension of GPG, except the trading partner's public key which must have the .KEY extension.
- Files must be placed in the "To\_Molina" folder. Within a minute, the file will be processed and removed from the folder. **If a file is not encrypted, it will be deleted and will not process by the system.**
- Files contained within the encrypted GPG file must be named according to current EDI naming conventions and use the correct claim type file extension listed in Section 4.5.1.
- When uploading multiple files of the same claim type in one session, please allow the system time to rename the file before uploading the next file. A minimum 10 second delay between uploads is recommended. Failure to do so may result in your second file overwriting the first when you are uploading files of a similar claim type during that session.

### 4.7.5 Files Sent From Molina

- All files sent from Molina to trading partners will be encrypted using the trading partner's public key and have a file extension of GPG. For this reason, it is important to upload your key 5 days prior to expecting a file to be available from Molina.
- Files sent to trading partners will be placed in the user's "From\_Molina" folder. Any file older than 7 days has the potential to be deleted by the system. Therefore, **it is the responsibility of trading partners to retrieve files in a timely manner.** The following file types will be available for download:

TA1	999	835
-----	-----	-----

#### 4.7.6 First Time Logging into a Region

Using a secure FTP (sFTP) client, connect to <ftp.lamedicaid.com>. Enter the login id and password supplied by Molina for connecting to the BBS. You will be allowed to change your password. Passwords must be a minimum of 8 characters and contain 1 number and 1 special character. Please be sure to remember the password once it is changed. **Molina will not have a method to retrieve user passwords.** If a password is forgotten it will have to be reset by calling 1-877-598-8753 and then changed upon next login. Synchronization, if desired, of the passwords to the BBS and the sFTP systems will be the user's responsibility.

#### 4.7.7 Trading Partner Key Information

Molina has specific requirements for the public key that is created by trading partners for encrypting files sent from Molina. When creating a key, in the Comment section, the trading partner must put their trading partner id and nothing else. If you are using an application to create the key that does not have a comment field, then the trading partner id must be included in the name field enclosed in parentheses. I.e. Test A Submitter (450XXXX). The following example uses Kleopatra to create a key for trading partner 4509999:

**Certificate Creation Wizard**

**Enter Details**

Please enter your personal details below. If you want more control over the certificate parameters, click on the Advanced Settings button.

Name:  (required)

E-Mail:  (required)

Comment:  (optional)

Test A Submitter (4509999) <test.submitter@testcompany.com>

Advanced Settings...

< Back   Next >   Cancel

Once created, the public key must be uploaded to the "To\_Molina" folder. The key must be named TradingPartner.KEY. For example, submitter 4509999 will upload a key named 4509999.KEY. No other file extension will be accepted. The key will be used for both the Submitter Testing and Production host regions.

Please allow 5 business days for key processing. Trading partners will be notified when the key has been added to the system.

## 4.8 Medicaid Eligibility Verification System (MEVS) Overview

The Medicaid Eligibility Verification System (MEVS) is an electronic system used to verify recipient Medicaid eligibility. This electronic verification system will provide date specific eligibility which will help reduce claim denials related to eligibility. MEVS is available 24 hours per day, 7 days per week, except for 2 short maintenance windows each week. MEVS provides Medicaid providers with easy and immediate access to current Medicaid recipient eligibility information.

MEVS allows a provider to retrieve a **printable** verification of:

- Recipient Medicaid eligibility
- Health Plan linkages
- Third party insurance resources
- Service limits and restrictions
- Lock-In information

MEVS can be accessed by any of these methods:

- eMEVS - Internet web application on [www.lamedicaid.com](http://www.lamedicaid.com)
- Switch Vendor - (which may incorporate 'swipe card devices') through the following approved vendors: Emdeon/The Potomac Group, Healthcare Data Exchange, TransUnion/MedData, Experian/Passport Health Communications, HealthNet and Dorado Systems LLC
- Batch file - submission using the procedures described below and detailed in the [270 Batch MEVS Companion Guide](#).
- Affordable Care Act (ACA) - CORE compliant Soap Internet connectivity

### 4.8.1 e-MEVS

Providers can verify eligibility and service limits for a Medicaid recipient using a web application accessed through [www.lamedicaid.com](http://www.lamedicaid.com). This application provides eligibility verification as an alternative to MEVS vendor transactions and REVS 800-776-6323 or 225-216-7387 (voice eligibility verification).

The eMEVS application is a secure web-based tool for low-volume providers who do not work with a switch vendor and do not wish to use the Affordable Care Act CORE compliant interface to verify Medicaid eligibility information. The application is accessible to all providers who have a computer with Internet access using a recent version of an Internet browser software such as Internet Explorer. Providers must establish a valid online account with Louisiana Medicaid complete with a valid login ID and password, in order to access the web-based eMEVS tool.

Only fifteen transactions or inquiry requests are allowed per session. Providers who have more than fifteen requests must log into a new session in order to complete their inquiries. When all mandatory fields of the inquiry page have been entered, and the Submit button is selected, a transaction is sent to the MEVS system. The response is displayed on the web browser.

More information can be found at the following link: <http://www.lamedicaid.com/provweb1/Forms/forms.htm#user>.

To ensure the security of recipient and provider information the Provider Applications area is on a secure portal and is available to **Louisiana Medicaid providers only**. It is the responsibility of each Medicaid provider to register and obtain a login and password for this area of this website to access the applications that are contained therein. Select the Registration directory link on the Home page to register.

### 4.8.2 Switch Vendor MEVS

Providers may access recipient eligibility by using the following pieces of information:

- Sixteen-digit card control number and recipient's 8-digit birth date or social security number
- Thirteen-digit Medicaid ID number and recipient's 8-digit birth date or social security number

Or any **two** of the following pieces of information:

- Recipient social security number
- Recipient name
- Recipient 8-digit birth date

### 4.8.3 Approved Switch Vendors

MEVS access is provided through contracts with approved "switch vendors" who will be responsible for provision of the magnetic card reader, PC software, or computer terminal necessary to access this system. Fees will be dependent on the type of services selected. All fees are the responsibility of the provider. **Providers are cautioned to be certain they are contracting with an approved vendor.**

<p><b>Vendor: Emdeon Business Services</b>  <b>Contact: Inside Professional Sales</b>  <b>Phone: (866) 369-8805</b>  <b>Website: <a href="http://www.emdeon.com">www.emdeon.com</a></b></p>	<p><b>Vendor: HealthNet Data Link</b>  <b>Contact: Lucy Gardner or Kenneth Nedd</b>  <b>Phone: (800) 338-1079</b>  <b>(954) 331-6500</b>  <b>Email: <a href="mailto:lgardner@ehdl.com">lgardner@ehdl.com</a></b>  <b>Website: <a href="http://www.ehdl.com">www.ehdl.com</a></b></p>
<p><b>Vendor: Healthcare Data Exchange</b>  <b>Contact: Daniel E. Sullivan</b>  <b>Phone: (610) 219-6774</b>  <b>Email: <a href="mailto:Daniel.E.Sullivan@siemens.com">Daniel.E.Sullivan@siemens.com</a></b>  <b>Website: <a href="http://www.hdx.com">www.hdx.com</a></b></p>	<p><b>Vendor: Experian (formerly Passport Health)</b>  <b>Contact: Laura Gilmore</b>  <b>Phone: (615) 661-5657</b>  <b>Email: <a href="mailto:laura.gilmore@experianhealth.com">laura.gilmore@experianhealth.com</a></b>  <b>Website: <a href="http://www.experian.com">www.experian.com</a></b></p>
<p><b>Vendor: Dorado Systems, LLC</b>  <b>Contact: Edward G. Kennedy</b>  <b>Phone: (856) 354-0048</b>  <b>Fax: (856) 354-0057</b>  <b>Email: <a href="mailto:sales@doradosystems.com">sales@doradosystems.com</a></b>  <b>Website: <a href="http://www.doradosystems.com">www.doradosystems.com</a></b></p>	<p><b>Vendor: TransUnion Healthcare, LLC</b>  <b>Contact: Healthcare Support</b>  <b>Phone: (888) 791-3088</b>  <b>Email: <a href="mailto:Healthcaresupport@transunion.com">Healthcaresupport@transunion.com</a></b>  <b>Website: <a href="http://www.transunion.com/healthcare">www.transunion.com/healthcare</a></b></p>

The listed vendors are available for calls about their products and options for accessing MEVS by the Medicaid provider community. Providers will be notified of any changes to the list of vendors through Remittance Advice Messages, Provider Update articles, and on the [lamedicaid.com](http://lamedicaid.com) website.

### 4.8.4 Batch 270/271 Eligibility Transactions

Submitters may choose to use the Molina Batch 270/271 submission process which allows submitters to inquire on eligibility for multiple recipients at one time. If a submitter elects to use the application, Molina will charge the submitter for the usage. Submitters must be pre-approved for use of this application, and the application charges are subject to change with appropriate approval of the Louisiana Department of Health and proper advanced notification to the participating submitter.

Providers interested in enrolling for this application should contact:

Contact: Kermit Patty  
 e-mail: [Kermit.pattyjr@molinahealthcare.com](mailto:Kermit.pattyjr@molinahealthcare.com)  
 Telephone: 225=216-6241

## 4.9 On-Line Claim Status Inquiry

### 4.9.1 Overview

The Electronic Claims Status Inquiry (eCSI) Web Application provides a secure web based tool for providers to inquire on the status of a claim within the adjudication process. The application is accessible to all providers who have a computer with Internet access using a recent version of Internet browser software such as Internet Explorer. Providers must establish a valid online account with Louisiana Medicaid complete with a valid login ID and password, in order to access the web-based eCSI tool. Any entity submitting 276 claim status requests must be associated in Louisiana Medicaid with the Trading Partner that originated the claim.

The eCSI application enables providers to inquire on the status of claims (i.e. paid, denied, voided, etc.) using the HIPAA compliant Transaction Set 276/277. It is a real time application that processes in accordance with the Health Care Claim Status Request and Response 276/277 Implementation Guide, ANSI X12N 276/277.

Claim information is available for 2 years from the claim's date of receipt. On a daily basis, claim activity including new claims, adjustments, voids, and pending claims is made available to the eCSI application.

Claim status inquiry and response processes are supported for all LMMIS claim types. Providers can inquire on the status of a claim by executing a search via a generic general method or by specific ICN.

More information can be found at the following link: <http://www.lamedicaid.com/provweb1/Forms/forms.htm#user>

**Providers must use either the web based e-CSI application or the CAQH/CORE SOAP/MIME means to inquire on the status of claims submitted to Louisiana Medicaid.**

### 4.9.2 Accessing the Application

After successfully logging on to [www.lamedicaid.com](http://www.lamedicaid.com), the eCSI application is available to all enrolled providers, with the exception of "prescribing only" providers.

Directions for establishing a valid online provider account logon are also available on this website at the **Provider Web Account Registration Instruction** link located in the directory links of the Home page of [www.lamedicaid.com](http://www.lamedicaid.com).

### 4.9.3 Navigating Through the Application

- Select the **Search** link to perform a Claims Status Inquiry search by ICN or General Method
- Select the **Response** link to view the claims status response screen
- Select the **Print Friendly** link to view a print friendly version of the response screen
- Select the **eMEVS** link to access the electronic Medicaid Eligibility Verification System
- Select the **Main Menu** link to discontinue current processing at any page and return to the Provider Applications Area Main Menu.
- Select the **Help** link to obtain field specific help information.
- Select the **Clear Screen** link to clear a page and reset the page data fields to their default values

There is a selection-processing button that appears in the lower right hand corner of the web screen.

- Select the **Submit** button to process the data entered on a screen.

Providers who are experiencing difficulty in establishing an account may contact the Molina **Technical Support Desk at 1-877-598-8753**, Monday – Friday 8:00 a.m. – 5:00 p.m. CT or request support by e-mailing [lasupport@molinahealthcare.com](mailto:lasupport@molinahealthcare.com).

## **5.0 ACA CORE Transport Modes**

### **5.1 Connectivity Overview**

CAQH/CORE Rule 270 requires payers to provide connectivity information regarding obtaining Recipient Eligibility & Benefits, Claims Status information, as well as, Electronic Remittance Advice. Specifically required is information about submitting a CORE Compliant transaction. The following information is for existing and potential submitters and providers of Louisiana Medicaid.

As a requirement of the Affordable Care Act (ACA) and CAQH/CORE, Louisiana Medicaid supports batch transmission mode for Eligibility 270/271 and Real Time transmission mode for Eligibility 270/271 and Claim Status 276/277 using the following envelope standards for the 270/271 and 276/277 transaction sets.

- HTTP MIME Multipart (Envelope Standard A)
- SOAP+WSDL (normative) (Envelope Standard B)

Please refer to the CORE 270: Connectivity rule document at the link below for detailed information about the specifications for HTTP MIME Multipart and SOAP+WSDL based interactions.

<http://www.caqh.org/pdf/CLEAN5010/270-v5010.pdf>

The following URLs will be used for Louisiana CORE connectivity

SOAP Real Time or Batch: <https://www.lamedicaid.com/CAQHCOREConnectivity/soap.svc>

Testing: <https://www.lamedicaid.com/CAQHCOREConnectivity/soap.svc>

#### **5.1.1 Compliance Version**

Louisiana Medicaid is compliant with Phase II CORE 270: Connectivity Rule version 2.2.0 March 2011.

#### **5.1.2 Supported Transactions**

- 270/271 Eligibility Real Time SOAP and MIME - 005010X279A1 transactions
- 270/271 Eligibility Batch SOAP and MIME - 005010X279A1 transactions
- 276/277 Claim Status Inquiry Real Time SOAP and MIME - 005010X212 transactions
- 835 Remittance Advice SOAP and MIME transactions- 005010X221A1 transaction

#### **5.1.3 Batch Transactions**

Batch transactions are supported for the 270/271 only. Not for the 276/277.

#### **5.1.4 Passwords**

A username and password is required to authenticate the submitted transaction request when using the SOAP+WSDL or MIME Multipart modes.

- Providers can contact the Lamedicaid.com Helpdesk to request a username and password for use with SOAP+WSDL or MIME Multipart modes.
- Providers can reset their password using Lamedicaid.com password maintenance screens.

Please note: Anyone with access to the Provider's admin account has the authority to update passwords for your organization.

## **5.2 System Availability**



The Louisiana Medicaid claims adjudication system and supporting eligibility transaction systems are monitored 24 hours a day, 7 days a week for the entire calendar year including holidays. We strive for 99.5% uptime with the exception of the following scheduled weekly maintenance windows.

- 1) Fridays between 6PM and 8PM Central Time
- 2) Saturday between 11PM and Sunday 1AM

For information on scheduled and unscheduled outages, please check the banner on [lamedicaid.com](http://www.lamedicaid.com) at the following link. <http://www.lamedicaid.com>

Any unscheduled/emergency downtimes that affect our ability to accept or reply to an EDI transaction will be communicated to all trading partners via the [www.lamedicaid.com](http://www.lamedicaid.com) banner.

### **5.3 Transaction Sizes**

Real Time EDI single transactions can be received at a rate of 100 transactions per minute per partner. Batch files should not exceed 3MB in size and no more than 1 file per trading partner per day.

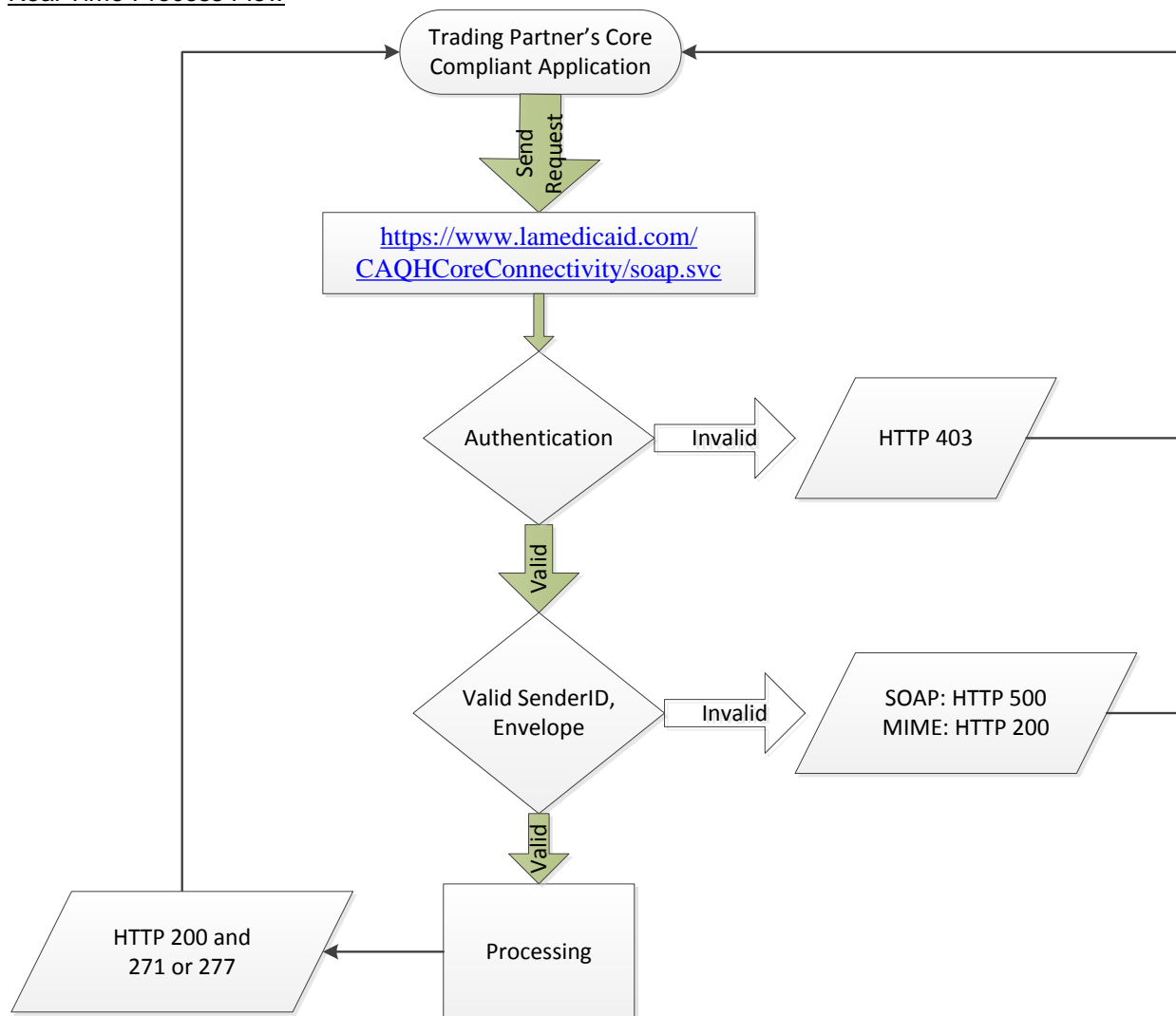
### **5.4 Process Flows**

#### **5.4.1 Real Time Eligibility Request and Response Handling**

HTTP/S supports a request-response message pattern, meaning that the sender submits a message and then waits for a response from the message receiver. The process for Real Time request and response works as follows:

1. The user application submits a Real Time SOAP or MIME request.
  - a. Submit SOAP to <<https://www.lamedicaid.com/CAQHCoreConnectivity/soap.svc>>
  - b. Submit MIME to <<https://www.lamedicaid.com/CAQHCoreConnectivity/mime.aspx>>
2. The system authenticates the username and password.  
If unable to authenticate, an HTTP 403 Forbidden Response is returned.
3. If the username and password are successfully authenticated, an HTTP 200 OK status response is returned to the user within 20 seconds along with the 271 or 277 response.
4. The system validates SenderID and other elements of the CORE envelope metadata.  
If validation fails, the following errors are returned:
  - a. For SOAP: HTTP 500 SOAP fault with Code=Sender & Reason=Authentication Failure
  - b. For MIME: HTTP 200 with ErrorCode=Sender & ErrorMessage=Authentication Failure

The diagram below depicts the real time request and response flow. [Refer to Appendix C for an example of SOAP Real Time 270/271 Request and Response.](#)

Real Time Process Flow

A response to the Real Time inquiry will be provided within 20 seconds during hours of availability.

**Retransmission Procedures**

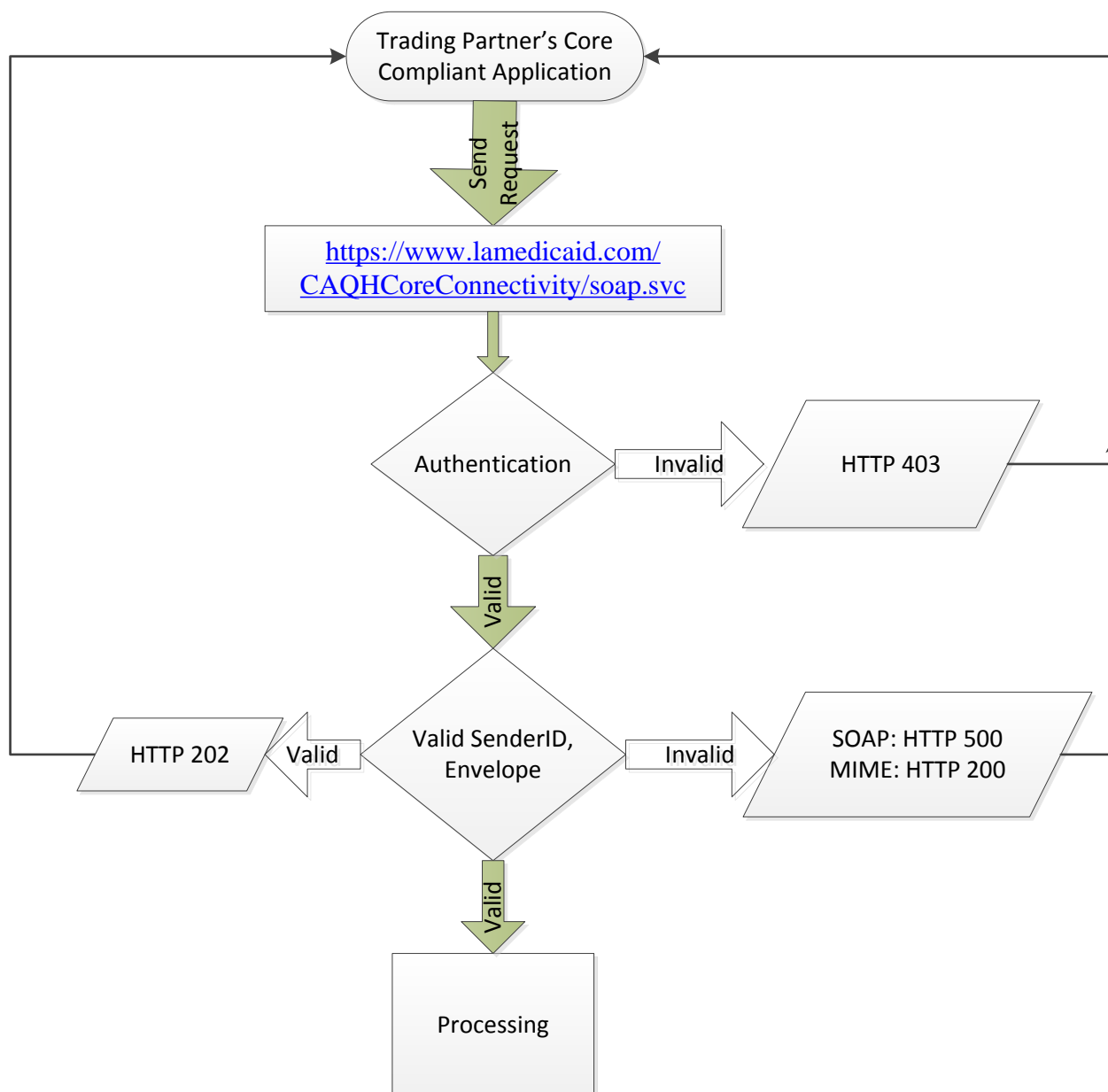
If a Real Time response message is not received within the 60-second response period, the submitter's system should send a duplicate transaction no sooner than 90 seconds after the original attempt was sent.

If no Real Time response is received after the second attempt, the submitter's system should submit no more than 5 duplicate transactions within the next 15 minutes. If the additional attempt results in the same timeout termination, the submitter's system should notify the submitter to contact Louisiana Medicaid directly to determine if system availability problems exist or if there are known internet traffic constraints causing the delay. Please verify the file contents before any further resubmission.

**5.4.2 Batch Request and Response Handling****Initial Batch Submission**

1. The user application submits a batch SOAP or MIME request.
  - a. Submit SOAP to <<https://www.lamedicaid.com/CAQHCoreConnectivity/soap.svc>>

3. The system authenticates the username and password. If unable to authenticate, an HTTP 403 Forbidden Response is returned.
4. The system validates SenderId and other elements of the CORE envelope metadata. If validation fails, the following errors are returned:
  - a. For SOAP: HTTP 500 SOAP fault with Code=Sender & Reason=Authentication Failure
  - b. For MIME: HTTP 200 with ErrorCode=Sender & ErrorMessage=Authentication Failure
5. If the username and password are successfully authenticated and the envelope metadata validated, an HTTP 202 OK status response is returned to the user indicating the system has accepted the batch submission for processing.



### 5.4.3 Batch Pickup

1. The user application submits a time-delayed batch pickup request.
  - a. Submit SOAP to <<https://www.lamedicaid.com/CAQHCoreConnectivity/soap.svc>>

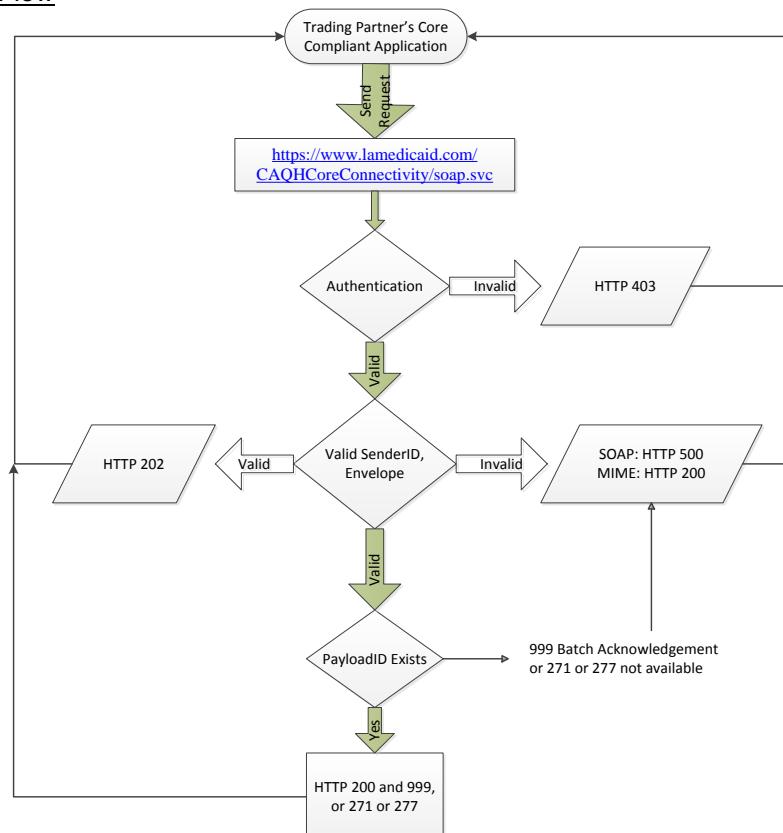
2. The system authenticates the username and password. If unable to authenticate, an HTTP 403 Forbidden Response is returned.
3. The Louisiana Medicaid system validates SenderID and other elements of the CORE envelope metadata. If validation fails, the following errors are returned:
  - a. For SOAP: HTTP 500 SOAP fault with Code=Sender & Reason=Authentication Failure
  - b. For MIME: HTTP 200 with ErrorCode=Sender & ErrorMessage=Authentication Failure
4. If the username and password are successfully authenticated and the envelope metadata validated, an HTTP 202 response is sent and a match for PayloadID will be performed for an acknowledgement or response transaction, as appropriate for Payload Type. If no match occurs, an HTTP 400 status response is returned.
5. If a PayloadID match occurs, one of the following will be generated back to the user with an HTTP 200 status.
  - a. A 999 Reject response will be available within one hour if there is a problem with the segments occurring between the ISA and IEA.
  - b. A 999 Acceptance response will be available within one hour if no problems are found.
  - c. A 271 response transaction will be available.

### Batch Response Times

A response to a batch inquiry submitted by 8:00 p.m. Central on a business day will be provided by 6:00 a.m. Central the following business day.

Note: Multiple interchanges may be returned within the same Payload. The following diagram depicts the Batch Pickup flow.

### Batch Pickup Process Flow



## **5.5 Communication Protocols**

### **5.5.1 SOAP + WSDL**

Louisiana Medicaid supports transactions formatted according to the Simple Object Access Protocol (SOAP) conforming to standards set for the Web Services Description Language (WSDL) for XML envelope formatting, submission, and retrieval.

- SOAP XML Schema - The XML schema definition set forth by CORE is located at: <http://www.caqh.org/SOAP/WSDL/CORERule2.2.0.xsd>
- WSDL Information - The WSDL schema definition set forth by CORE is located at: <http://www.caqh.org/SOAP/WSDL/CORERule2.2.0.xsd>

**Section 5.6 describes SOAP interaction with Louisiana Medicaid in detail.**

### **5.5.2 HTTP MIME Multipart**

Louisiana Medicaid supports standard HTTP MIME messages for CAQH CORE Phase II and Phase III transactions. More detailed description of MIME interaction will be supplied upon written request to HipaaEDI@molinahealthcare.com.

## **5.6 CAQH CORE Phase II and Phase III ERA SOAP + WSDL Interface**

### **5.6.1 Overview**

Molina supports a CAQH CORE Phase II (Eligibility and Claim Status) - and Phase III (ERA) compliant SOAP interface that allows you to programmatically send and receive Real Time and batch (if available) transactions. The Phase III transactions are ASC X12 005010X231A1 Implementation Acknowledgment for Health Care Insurance (999) Technical 230 Report Type 3 231 and ASC X12 005010X221A1 Claim Payment/Advice (835) Professional Technical Report Type 3.

You can find more information about

- Phase II interface at [http://www.caqh.org/CORE\\_phase2.php](http://www.caqh.org/CORE_phase2.php) and
- Phase III interface at [http://www.caqh.org/CORE\\_phase3.php](http://www.caqh.org/CORE_phase3.php).

Only the 3 most recent 835s will be available via this CAQH/CORE SOAP/MIME service. Louisiana's normal payment cycle is weekly.\* So, you will usually have the most current 3 weeks available to choose from. A parameter supplied with your SOAP/MIME request must include one of the 3 using the following:

- 0 = Most current 835 (Current week)
- 1 = Prior generation (previous week)
- 2 = 2 generations ago (2 weeks ago)

\*The weekly 835 Remittance Advice will be available no sooner than 3 days prior to EFT check date and no later than 3 days following that check date. The check date for any given week can be obtained from [lamedicaid.com](http://www.lamedicaid.com) at the following link: <http://www.lamedicaid.com/>

To use this CORE interface you will need to write a program to serve as your SOAP client. Connect your SOAP client to the Louisiana Medicaid URL as shown here:

<https://www.lamedicaid.com/CAQHCOREConnectivity/soap.svc>

Most programming languages support SOAP clients and contain documentation to help you create a client that can send/receive information to this interface. A sample SOAP client written in PHP is included in section 5.7.9 for your reference.

**Notes about the parameters:**

The CORE interface requires you to submit some parameters. This section describes some specific information about the expectations of the Louisiana Medicaid EDI system with regard to these parameters:

**5.6.2 Header Requirements**

The envelope metadata requirements are described briefly in the table below.

<b>Field</b>	<b>Accepted Values</b>	<b>Comment</b>
<b>PayloadType</b>	X12_270_Request_005010X279A1 X12_005010_Request_Batch_Results_271 X12_276_Request_005010X212 X12_005010_Request_Batch_Results_277 X12_TA1_Response_00501X231A1 X12_999_Response_005010X231A1	Real Time & batch submissions Batch results retrieval for 270/271 Real Time & batch submissions Batch results retrieval for 276/277 TA1 response (Real Time) 999 response (Real Time)
<b>ProcessingMode</b>	Real Time Batch	Batch used for either submission or pickup
<b>PayloadID</b>	PayloadID will conform to ISO UUID standards (described at <a href="ftp://ftp.rfceditor.org/in-notes/rfc4122.txt">ftp://ftp.rfceditor.org/in-notes/rfc4122.txt</a> ), with hexadecimal notation, generated using a combination of local timestamp (in milliseconds) as well as the hardware (MAC) address33, to ensure uniqueness.	
<b>Payload Length</b>	Length of the X12 document	Required only if ProcessingMode is Batch; otherwise do not send.
<b>TimeStamp</b>	YYYY-MM-DDTHH:MM:SSZ	See <a href="http://www.w3.org/TR/xmlschema11-2/#dateTime">http://www.w3.org/TR/xmlschema11-2/#dateTime</a>
<b>User Name</b>	Louisiana Medicaid Assigned	For SOAP+WSDL and MIME Multipart use only.
<b>Field</b>	<b>Accepted Values</b>	<b>Comment</b>
<b>Password</b>	Louisiana Medicaid Assigned	For SOAP+WSDL and MIME Multipart use only.
<b>SenderID</b>	Louisiana Medicaid Assigned	This is assigned based on how you are enrolled in Louisiana Medicaid. It will be your NPI number or Provider ID.
<b>ReceiverID</b>	610551	This is the Louisiana Medicaid receiver ID.
<b>CORERuleVersion</b>	2.2.0	
<b>Checksum</b>	Checksum of the X12 document	Algorithm is SHA-1; encoding is Hex; required only if Processing Mode is Batch. Checksum must be computed only on the payload and not on the metadata. Do not send for Real Time.
<b>Payload</b>		Contains the X12 request.

### 5.6.3 *PayloadType*

Must be one of these types:

ASC X12\_270\_005010X279A1 => X12\_271\_005010X279A1

ASC X12\_276\_005010X212 => X12\_277\_005010X212

ASC X12\_835\_Request\_05010X221A1

- The *PayloadType* "X12\_835\_Request\_005010X221A1" signifies to Louisiana Medicaid that you are requesting the most current ASC X12 835 5010 file in your mailbox.
- Louisiana Medicaid responds with *PayloadType* "X12\_835\_Response\_005010X221A1" and the *Payload* contains the contents of your most recent ASC X12 835 5010 file in MTOM format.

ASC X12\_999\_RetrievalRequest\_05010X231A1

- The *PayloadType* "X12\_999\_RetrievalRequest\_005010X231A1" signifies to Louisiana Medicaid that you are requesting the most current ASC X12 999 5010 file.
- Louisiana Medicaid responds with *PayloadType* "X12\_999\_Response\_005010X231A1" and the *Payload* contains the contents of your most recent ASC X12 999 5010 file in MTOM format.

### 5.6.4 *Processing Mode*

Must be Real Time or Batch. The case must match.

### 5.6.5 *PayloadID*

This can be whatever you want, either text or numbers, as long as no special characters are used. You should use a unique number that will help you identify the response to your request. Note that you can use only one payload ID per message.

#### **835 GenerationID**

This must be a zero, one or a two, numbers only as follows:

0 = Most current 835 (Current week)

1 = Prior generation (previous week)

2 = 2 generations ago (2 weeks ago)

### 5.6.6 *TimeStamp*

The format of the *TimeStamp* must follow the conventions found at <http://www.w3.org/TR/xmlschema11-2/#dateTime>. Examples of a valid *TimeStamp* are 2009-08-03T12:12:55-00:00 and 2009-08-03T12:12:55Z.

### 5.6.7 *Sender*

Must contain your Submitter ID.

### 5.6.8 *ReceiverID*

Must contain 610551 (this is Molina's EDI ID).

### 5.6.9 *CORE Rule Version*

Must contain 2.2.0.

### 5.6.10 Payload

Contains the ASC X12 data for your submission. It must be a valid ASC X12 file with the correct settings in the envelope. The settings for sender and receiver must match the SenderID and ReceiverID in the parameters.

All request and response types have been set to allow only one occurrence of each field per request/response. For example, you must have one and only one PayloadID in a COREEnvelopeReal TimeRequest.

The following are some important things to keep in mind when sending files using the CORE II SOAP interface:

1. When your account is in test, you will continue to get the automatically generated “generic” response in the payload of the response message. This response is intended to show that your receiving program can at least accept a response. To get a good response back from Molina, your account will need to be placed into production.
2. File size when using the SOAP interface, will be negotiated between Molina and Trading partner.
3. In order to connect, you need to ensure that the security information is correct. It is difficult to provide specific guidance here, but you can refer to the WSSE RFQ at <http://www.oasis-open.org/committees/wss/documents/WSS-Username-02-0223-merged.pdf>.

*Note: All request and response types have been set to allow only one occurrence of each field per request/response.*

### 5.6.11 SOAP Sample in PHP

This is just an example, and is not intended to function as-is. You will need to understand how to write the program and handle the response appropriately. Follow the CORE II specifications mentioned above, which contain detailed instructions about the format of the request and the response.

```
class mySoap extends SoapClient
{
function __doRequest($request, $location, $saction, $version)
{
$doc = new DOMDocument('1.0');
$doc->loadXML($request);
$objWSSE = new WSSESoap($doc);
$objWSSE->addUserToken(constant("UserName"), constant("Password"), True);
print(htmlentities(html_entity_decode($objWSSE->saveXML())));
return trim(html_entity_decode(parent::__doRequest($objWSSE->saveXML(), $location,$saction,
$version)));
}
}
Try
{
$client = new mySoap(
"https://core.lamedicaid.com/soap",
array(
'location' => "https://core.lamedicaid.com/soap/index",
'trace' => true,
'exceptions' => true,
'soap_version'=>SOAP_1_2
)
);
$params = array(
'PayloadType' => 'X12_270_005010X279' ,
'ProcessingMode' => 'Real Time',
'PayloadID' => 'sam-ple-payload-ID',
'TimeStamp' => '2013-01-01T12:12:00',
'SenderID'=> '123456789',
```



```
'ReceiverID'=> '610551',
'CORERuleVersion'=> '2.2.0',
'Payload' => "<your X12 data goes here>"
);
print("Sending:<br><br> ");
print_r( $param );
flush();
$ret = $client->__soapCall("Real TimeTransaction",
array("COREEnvelopeReal TimeRequest"=>$param));
print_r(object_to_array($ret));
flush();
}
catch(SoapFault $fault)
{
echo("<br>soapfault: <BR><br>");
echo($fault->faultstring);
}
}
```

## ***5.7 CAQH CORE Phase II and Phase III ERA MIME Multipart Form Interface***

### ***5.7.1 Overview***

In addition to the SOAP interface, Louisiana Medicaid also supports a CAQH CORE Phase II- and Phase III (ERA)-compliant MIME multipart form interface. For more information:

Phase II interface -- [http://www.caqh.org/CORE\\_phase2.php](http://www.caqh.org/CORE_phase2.php)  
Phase III interface -- [http://www.caqh.org/CORE\\_phase3.php](http://www.caqh.org/CORE_phase3.php)

This interface is very similar to the SOAP interface. Since Phase IV eliminates the use of MIME interface, we will provide MIME interface details only upon request for use of that method for Phase II or Phase III supported transactions. Contact [HipaaEDI@molinahealthcare.com](mailto:HipaaEDI@molinahealthcare.com) for further MIME information.

## ***5.8 Error Reporting***

The HTTP and envelope processing status and error codes are described briefly here. For comprehensive instructions on using the SOAP+WSDL and MIME Multipart transport protocols, please use the web references provided earlier in this section in addition to the information provided here.

### 5.8.1 HTTP Status and Error Codes

The HTTP status and error codes included in the following table represent only a few of the commonly used status and error codes in the standard. An exhaustive list of HTTP Status Codes and descriptions are included in the HTTP specification at: <http://tools.ietf.org/html/rfc2616#section-6.1.1>

HTTP Status/Error Codes (Normative, Not Comprehensive)	Status Code Description (Intended Use)
200 OK	Success
202 Accepted	Batch file submission has been accepted (but not necessarily processed)
400 Bad Request	Incorrectly formatted HTTP headers
403 Forbidden	Access denied
500 Internal Server Error	The web-server encountered a processing error, or there was a SOAP fault (in case of SOAP envelope method)
5xx Server errors	Standard set of server side errors (e.g. 503 Service Unavailable)

### 5.8.2 Envelope Processing Status and Error Codes

When SOAP is used, some of the CORE-compliant Envelope Processing errors map to SOAP faults (see <http://www.w3.org/TR/soap12-part1/#soapfault>). To handle CORE-compliant envelope processing status and error codes, two fields called ErrorCode and ErrorMessage are included in the CORE-compliant Envelope. ErrorMessage is a free form text field that describes the error (for the purpose of troubleshooting and logging). When an error occurs, PayloadType is set to CoreEnvelopeError.

The following table shows commonly used error codes and descriptions.

CORE-compliant Envelope Processing Status/Error Codes (Normative, Comprehensive)	Status Code Description (Intended Use)
Success	Envelope was processed successfully.
<FieldName> Illegal	Illegal value provided for <FieldName>.
<FieldName> Required	The field <FieldName> is required but was not provided.
<FieldName>NotUnderstood	The field <FieldName> is not understood at the receiver. In the case of SOAP, this error is returned as a NotUnderstood SOAP fault.
VersionMismatch	The version of the envelope sent is not acceptable to the receiver. If the SOAP version is not valid at the receiver, a SOAP fault is returned with this fault code.
Unauthorized	The username/password or Client certificate could not be verified.
ChecksumMismatched	The checksum value computed on the recipient did not match the value that was sent in the envelope.
Sender	The envelope sent by the sender did not conform to the expected format. In the case of SOAP, this error should be sent as a SOAP fault with "Sender" fault code.
Receiver	The message could not be processed for reasons attributable to the Receiver (e.g., upstream process is not reachable). In the case of SOAP, this error should be sent as a SOAP fault with "Receiver" fault code.

## 5.9 Rules of Behavior

When using any of the preceding methods to send files to Molina, there are several parameters around throughput that need to be considered.

### Retransmission Procedures

If a Real Time response message is not received within the 60-second response period, the submitter's system should send a duplicate transaction no sooner than 90 seconds after the original attempt was sent.

If no Real Time response is received after the second attempt, the submitter's system should submit no more than 5 duplicate transactions within the next 15 minutes. If the additional attempt results in the same timeout termination, the submitter's system should notify the submitter to contact Louisiana Medicaid directly to determine if system availability problems exist or if there are known internet traffic constraints causing the delay. Please verify the file contents before any further resubmission. Definitions:

- a. **Timeout period.** This is the amount of time that your program waits before assuming that the server will not respond and closes the connection. A Real Time response should be received within 60 seconds.
- b. **Retry period.** In the event of a timeout or other error, this is the amount of time that your system will wait before trying to send the transaction again.. Excessive retries worsen the problem, as each new retry goes into the already waiting queue. If the Real Time response is not received within 60 seconds, wait at least 90 seconds before resending the transaction.
- c. **Number of retries.** This specifies the number of times that your system will try sending a certain file before it gives up and stops sending it. This number is up to you but should be no more than 5 within a 15 minute period.

**Three (3) consecutive connection attempts with an incorrect password will result in an account lockout. It will then be necessary to call the Molina Technical Support desk at 877-598-8753 to have the password reset and account unlocked. .**

Because 835s and Batch Eligibility files can be large, please exercise caution when setting up a submittal/retrieval process. Repeated successive uploads or downloads (looping) of large files will trigger a denial of service response by Molina. Because this activity will have an impact on other providers attempting to use the system, your account will be disabled. You will be removed from production and be required to test before resuming production.

Molina reserves the right to disable any account that is producing activity that adversely impacts other users of the system or is acting in a malicious manner.

## ***6.0 Appendix A – sFTP Background***

**Disclaimer:** Any software mentioned in this document is mentioned as an example of the types of software can be used to perform a certain function of the process. Molina does not recommend any particular software.

### ***6.1 What is sFTP?***

sFTP stands for Secure File Transfer Protocol. The protocol encrypts commands and data to prevent sensitive information from being transferred in plain text over a network.

### ***6.2 Public/Private Key File Processing***

Public/private keys are used to reduce the risk of third parties being able to decrypt and view confidential data files. Files are encrypted with public keys, and decrypted with private keys. Submitters will encrypt 837 claims files sent to Molina using the Molina public key. Molina will decrypt the 837 files using the Molina private key. For 835 transactions and other response files, Molina will encrypt the files using the submitter's public key. Submitters will decrypt response files using their private key.

### ***6.3 Key Generation***

A public/private encryption key generation software must be used by the submitter to generate a public/private key pair. One example of this type of software is the open source, Kleopatra. Once the key pair is created (see the "Trading Partner Key Information" section of this document), the public key must be exported and named 450XXXX.KEY, where XXXX is the submitter id, and uploaded to the Molina sFTP site (ftp.lamedicaid.com). It may take up to five (5) business days to process the key into the system. Once the key is added to the system, Molina will be able to encrypt 835s and other response files.

### ***6.4 sFTP Clients***

A sFTP client software must be used to connect to the Molina sFTP site. Standard FTP clients will not work. Examples of sFTP clients include WinSCP, FileZilla and WS\_FTP from Ipswitch. It is important to use the latest version of these software items.

This information is available in the specific companion guides for the 837 P, 837 I, 873 D, & 835 transactions.

The companion guides are available for download from within the HIPAA Desk Testing Service. Refer to the section on [HIPAA Desk Testing Service Enrollment](#).

These Companion Guides are also available on [www.lamedicaid.com](http://www.lamedicaid.com) under the HIPAA Information Center link.

## 7.0 Appendix B – Change Log

<b>Document Title</b>	Louisiana Medicaid Connectivity Guide	
<b>Author</b>	QA	
	<b>Revision History</b>	
<b>Date</b>	<b>Description of Change</b>	<b>By</b>
<b>2013</b>	Initial document	
<b>February 10, 2016</b>	Updates, change name to Louisiana Department of Health	Randy Sheehan
<b>October 5, 2016</b>	Updated 1.0, 2.0, 4.7.4, 4.8, 4.8.3, 5.1, 5.4.1, 5.4.2, 5.4.3, 5.6.1, 5.6.2, 5.6.10, 5.9, and 6.4. Updated logo. Replaced instance of Department of Health and Hospitals with Louisiana Department of Health. Changed red fonts to black.	Carol Simpson, Randy Sheehan
<b>January 12, 2016</b>	Added Appendix C	Carol Simpson, Randy Sheehan
<b>January 17, 2017</b>	Corrections to spelling, etc.	Kerri Capello, Randy Sheehan
<b>June 1, 2018</b>	Updates to Sections 1.0, 4.5.1,4.7.7.	Tracie Tate, EDI Dept

## 8.0 Appendix C – CAQH CORE Connectivity Valid Request and Response Examples

### Request

```
<?xml version="1.0" encoding="utf-16"?>
<s:Envelope xmlns:s="http://www.w3.org/2003/05/soap-envelope" xmlns:u="http://docs.oasis-open.org/wss/2004/01/oasis-200401-wss-wssecurity-utility-1.0.xsd">
  <s:Header>
    <o:Security s:mustUnderstand="1" xmlns:o="http://docs.oasis-open.org/wss/2004/01/oasis-200401-wss-wssecurity-secext-1.0.xsd">
      <u:Timestamp u:Id="_0">
        <u:Created>2017-01-11T03:00:00.0000000Z</u:Created>
        <u:Expires>2017-01-11T03:59:59.0000000Z</u:Expires>
      </u:Timestamp>
      <o:UsernameToken u:Id="uuid-33e3585e-38ed-4fe6-9753-978a5c5cf835-1">
        <o:Username>[username]</o:Username>
        <o:Password Type="http://docs.oasis-open.org/wss/2004/01/oasis-200401-wss-username-token-profile-1.0#PasswordText">[password]</o:Password>
      </o:UsernameToken>
    </o:Security>
  </s:Header>
  <s:Body>
    <RealTimeTransaction xmlns="http://tempuri.org/">
      <COREEnvelopRealTimeRequest xmlns:a="http://schemas.datacontract.org/2004/07/CAQHCoreConnectivity" xmlns:i="http://www.w3.org/2001/XMLSchema-instance">
        <a:CORERuleVersion>2.2.0</a:CORERuleVersion>
        <a:Payload>[X12 270 Request]</a:Payload>
        <a:PayloadID>a87662d1-9f92-4856-a771-60bc8b38c29b</a:PayloadID>
        <a:PayloadType>X12_270_Request_005010X279A1</a:PayloadType>
        <a:ProcessingMode>RealTime</a:ProcessingMode>
        <a:ReceiverID>610551</a:ReceiverID>
        <a:SenderID>[Sender ID]</a:SenderID>
        <a:TimeStamp>1/10/2017 3:00:00 PM</a:TimeStamp>
      </COREEnvelopRealTimeRequest>
    </RealTimeTransaction>
  </s:Body>
</s:Envelope>
```

### Response

```
<?xml version="1.0" encoding="utf-16"?>
<s:Envelope xmlns:s="http://www.w3.org/2003/05/soap-envelope">
  <s:Body>
    <RealTimeTransactionResponse xmlns="http://tempuri.org/">
      <RealTimeTransactionResult
        xmlns:a="http://schemas.datacontract.org/2004/07/CAQHCoreConnectivity"
        xmlns:i="http://www.w3.org/2001/XMLSchema-instance">
        <a:CORERuleVersion>2.2.0</a:CORERuleVersion>
        <a:ErrorCode>Success</a:ErrorCode>
        <a:ErrorMessage />
        <a:Payload>[X12 271 Response]</a:Payload>
        <a:PayloadID>a87662d1-9f92-4856-a771-60bc8b38c29b</a:PayloadID>
        <a:PayloadType>X12_270_Request_005010X279A1</a:PayloadType>
        <a:ProcessingMode>RealTime</a:ProcessingMode>
        <a:ReceiverID>[senderid]</a:ReceiverID>
        <a:SenderID>610551</a:SenderID>
        <a:TimeStamp>2017-01-10T03:00:00.000Z</a:TimeStamp>
      </RealTimeTransactionResult>
    </RealTimeTransactionResponse>
  </s:Body>
</s:Envelope>
```